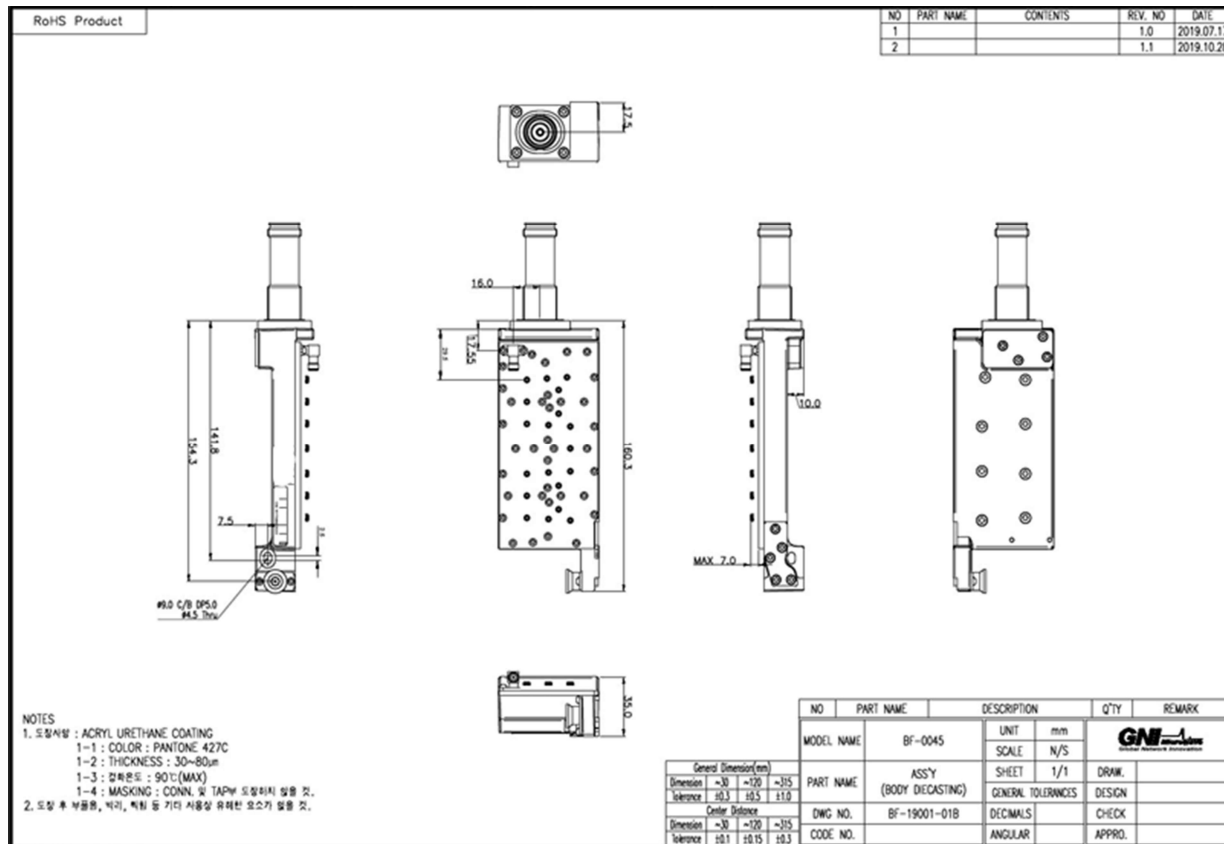


6. 제품_이동통신

1) 국내향 Cavity Filter(1/2)

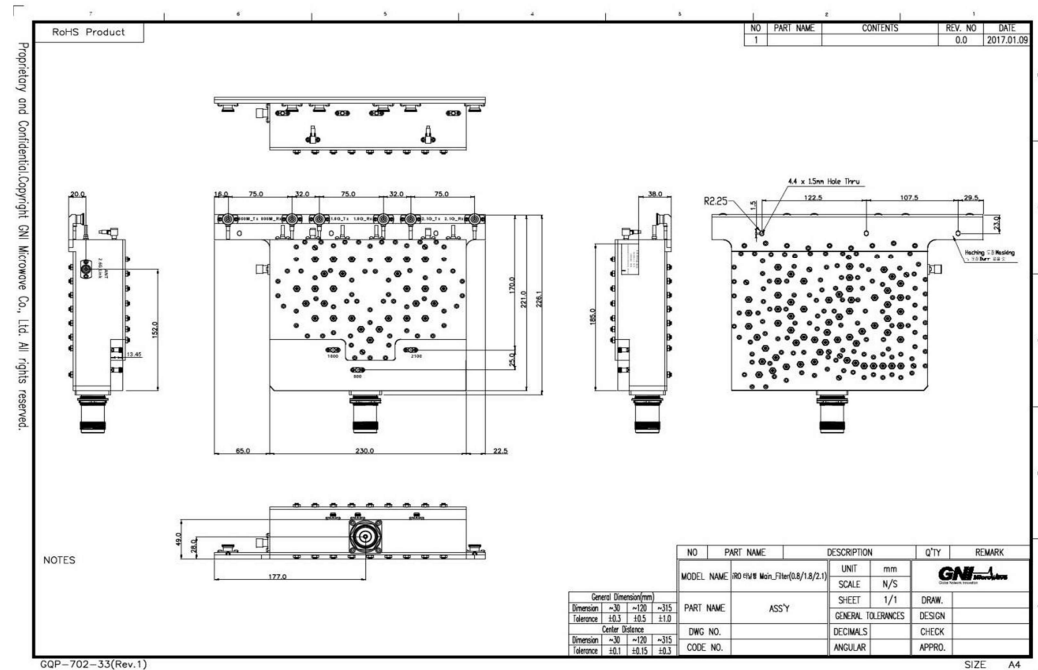
5G 3.5GHz 인빌딩 분산형 대출력 장비에 적용되는 Cavity Filter로서 3.6 ~ 3.8GHz 대역을 통과하는 BPF



1) 국내향 Cavity Filter(2/2)

저온, 고온 및 고습에서 전기적 규격을 만족하도록 설계 제작된 Cavity Filter Module

| | | | |
|--------------|----------------------|--------------|----------------------|
| RX | 824.025 MHz~838.5MHz | LTE-A TX 20M | 1811.0MHz~1829.0MHz |
| CDMA TX | 869.025MHz~883.5MHz | WCDMA RX | 1940.5MHz~1959.32MHz |
| LTE-A RX 20M | 1716.0MHz~1734.0MHz | WCDMA TX | 2130.5MHz~2149.32MHz |
| 2.6G | 2500MHz~2670MHz | | |

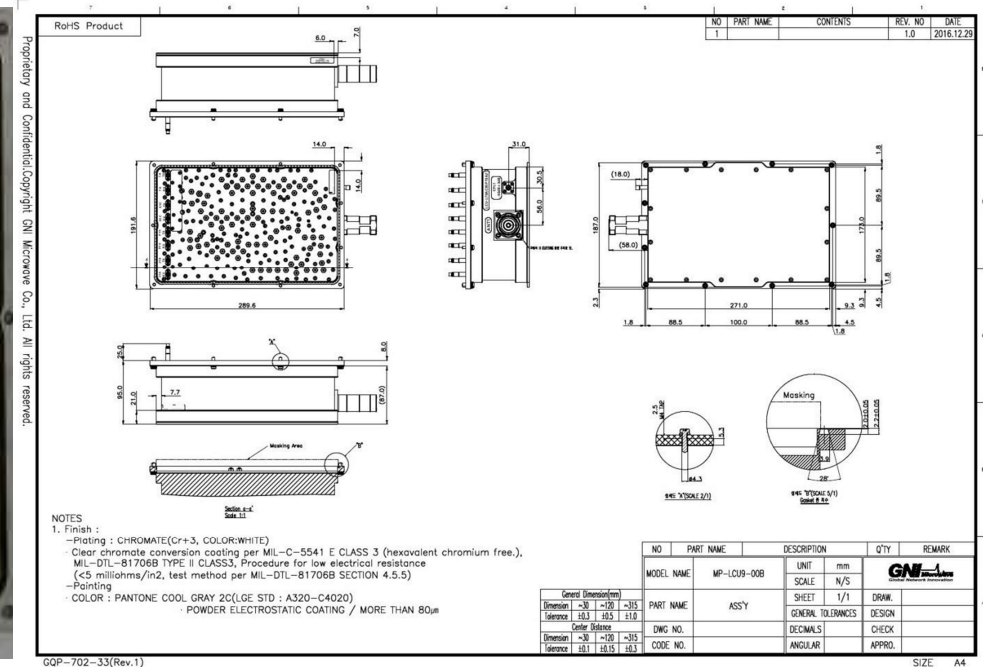
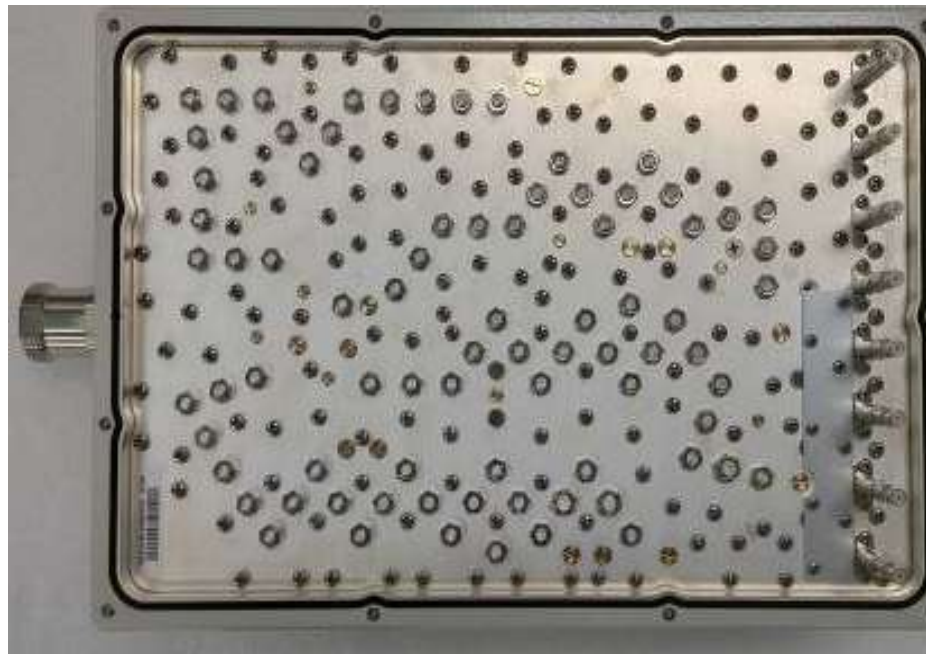


6. 제품_이동통신

2) 해외향 Cavity Filter

BPF와 CPL로 구성되어 저온, 고온 및 고습에서 전기적 규격을 만족하도록 설계 제작된
Cavity Filter Module

| | | | |
|-------------|-----------------|-------------|-----------------|
| LTE 700 RX | 703MHz~748MHz | LTE 700 TX | 758MHz~803MHz |
| 850 CELL RX | 824MHz~849MHz | 850 CELL TX | 869MHz~894MHz |
| 1900 PCS RX | 1850MHz~1915MHz | 1900 PCS TX | 1930MHz~1995MHz |
| 2100ARX | 1710MHz~1755MHz | 2100ATX | 2100MHz~2155MHz |



6. 제품_이동통신

5G 공용주파수 3개 대역을 입력으로 받아 결합하여 1개 출력으로 연결하는 공용화 결합기



3) Diplexer, 5G 결합기

| Items | Specification | | |
|------------------------------------|------------------------------------|------------------------|-----------------------|
| Parameter | 3.4GHz (LG U+) | 3.5GHz (KT) | 3.6GHz(SKT) |
| Pass Band | 3350.0~ 3499.15MHz | 3500.85~ 3599.15MHz | 3600.85~ 3900.0MHz |
| Guard Band width | 1.70MHz | | |
| Insertion Loss (Full band Avg.) | 상온: 0.7dB Max. / 환경: 0.9 dB Max. | | |
| Return Loss (Input Port 기준) | 18.0dB Min. (LGU+) | 18.0dB Min. (KT) | 18.0dB Min. (SKT) |
| Port to Port Isolation | SKT ↔ LG U+ : 30dB Min. | | |
| | LG U+ ↔ KT: 20dB Min. | | |
| | SKT ↔ KT: 20dB Min. | | |
| Group Delay | 180.0ns Max. | | |
| PIMD | -150dBc 이하 (@ 43dBm(C.W) X 2 Tone) | | |
| Input Power | 100W | | |
| Temperature | -30 ~ 60℃ | | |
| IP Grade | IP67 (Indoor & Outdoor) | | |
| Weight | TBD | | |
| Connector | N type Female | | |
| Finish | 분체도장 427C | | |

6. 제품_이동통신

4) 공용화 결합기 4X4_LTE All Path

4G LTE 이통 3사 TX / RX 분리결합기(4X4)



| Items | Specification | | | |
|----------------|---------------------------------|----------------|---------------|--------------------------|
| SKT1 | 800M | 1.8G | 2.1G | |
| | 824~839MHz | 1715~1735MHz | 1940~1960MHz | |
| | 869~884MHz | 1810~1830MHz | 2130~2150MHz | |
| SKT2 | 2.6G_BW20M | | 2.6G_BW10M | |
| | 2500~2520 MHz | | 2540~2550 MHz | |
| | 2620~2640 MHz | | 2660~2670 MHz | |
| KT | 800M | 900M | 1.8G | 2.1G |
| | 814~824MHz | 904.3~914.3MHz | 1735~1765MHz | 1960~1980MHz |
| | 859~869MHz | 949.3~959.3MHz | 1830~1859MHz | 2150~2170MHz |
| LG U+ | 800M | 1.8G | 2.1G | 2.6G |
| | 839~849MHz | 1770~1780MHz | 1920~1940MHz | 2520~2540MHz |
| | 884~894MHz | 1861~1870MHz | 2110~2130MHz | 2640~2660MHz |
| Insertion Loss | 4.8dB max | | | |
| | KT/LGU+ 1.8G RX Path: 5.3dB max | | | |
| | KT/LGU+ 1.8G TX Path: 5.8dB max | | | |
| Return Loss | 18dB min | | | |
| Isolation | All other RX, TX path 간 | | | 22dB min |
| | KT/LGU+ 1.8G TX Path | | | 20dB min |
| | LG -> KT port | | | 48dB min.@884~894MHz |
| | | | | 45dB min.@904.3~914.3MHz |
| | SK -> LG port | | | 30dB min.@2110~2130MHz |
| | | | | 50dB min.@1810~1830MHz |
| | SK -> KT port | | | 50dB min.@904.3~914.3MHz |